

USB 2.0 MICROSCOPE

USB Digital **Microscope**

VP-EYE



Install

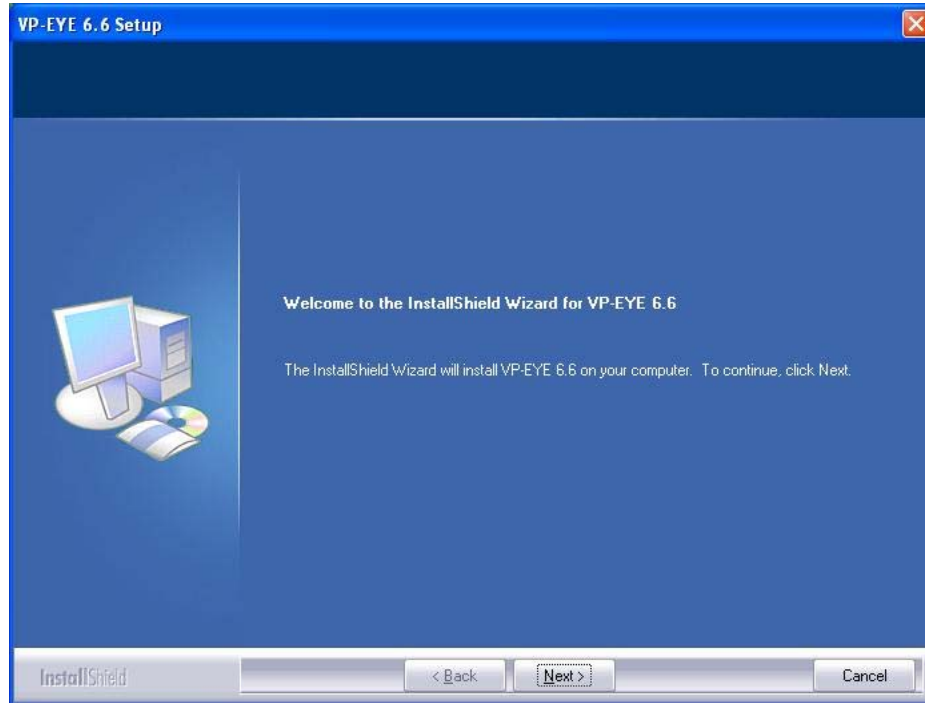
User Manual

Exit

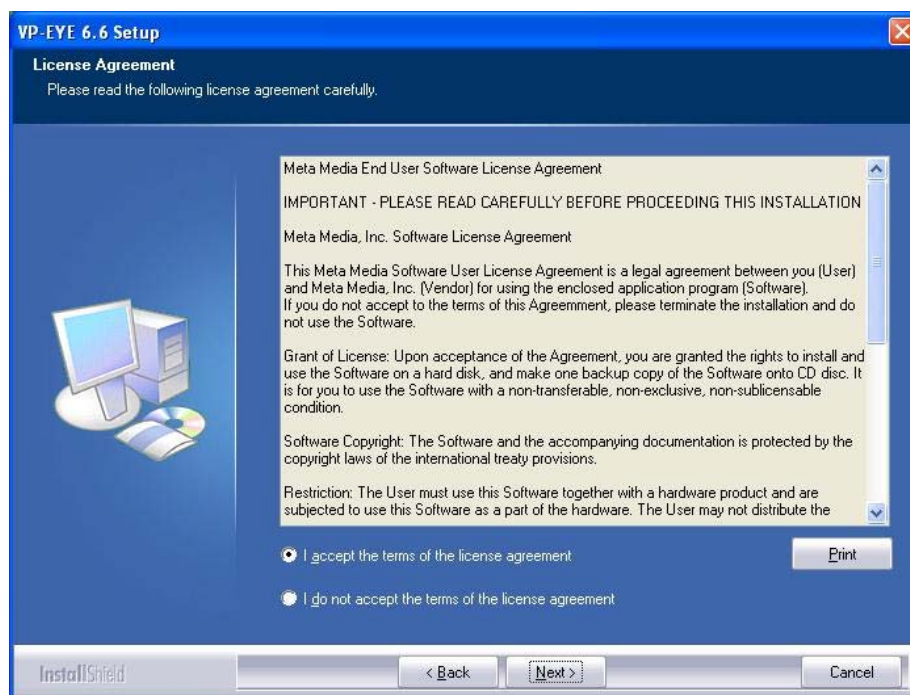
Quick Installation Guide

1. Insert the CD and it will auto start to install (if the picture below does not show up automatically, click the right button of mouse on the CD drive, then select “AutoPlay” to launch it).

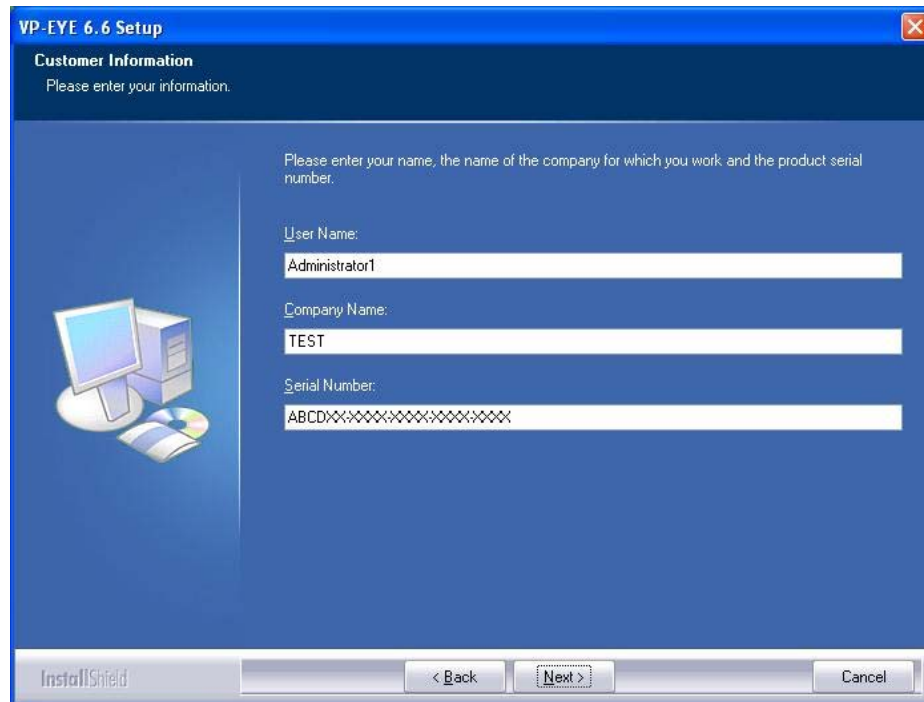
2. Click on Next.



3. Select “I accept the terms of the license agreement” and Click on Next.



4. Input the User Name, Company Name and Serial Number then click on Next.



VP-EYE 6.6 Setup

Customer Information
Please enter your information.

Please enter your name, the name of the company for which you work and the product serial number.

User Name:
Administrator1

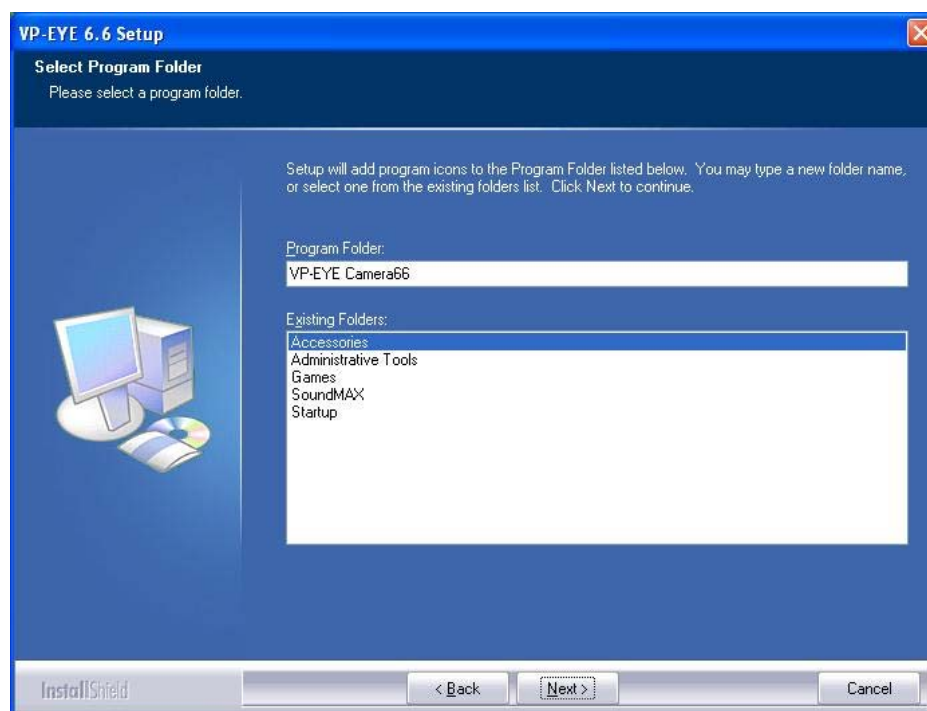
Company Name:
TEST

Serial Number:
ABCDXXXXXXXXXXXXXXXXXXXX

InstallShield

< Back Next > Cancel

5. Click on Next. (Note: Don't change the Program folder.)



VP-EYE 6.6 Setup

Select Program Folder
Please select a program folder.

Setup will add program icons to the Program Folder listed below. You may type a new folder name, or select one from the existing folders list. Click Next to continue.

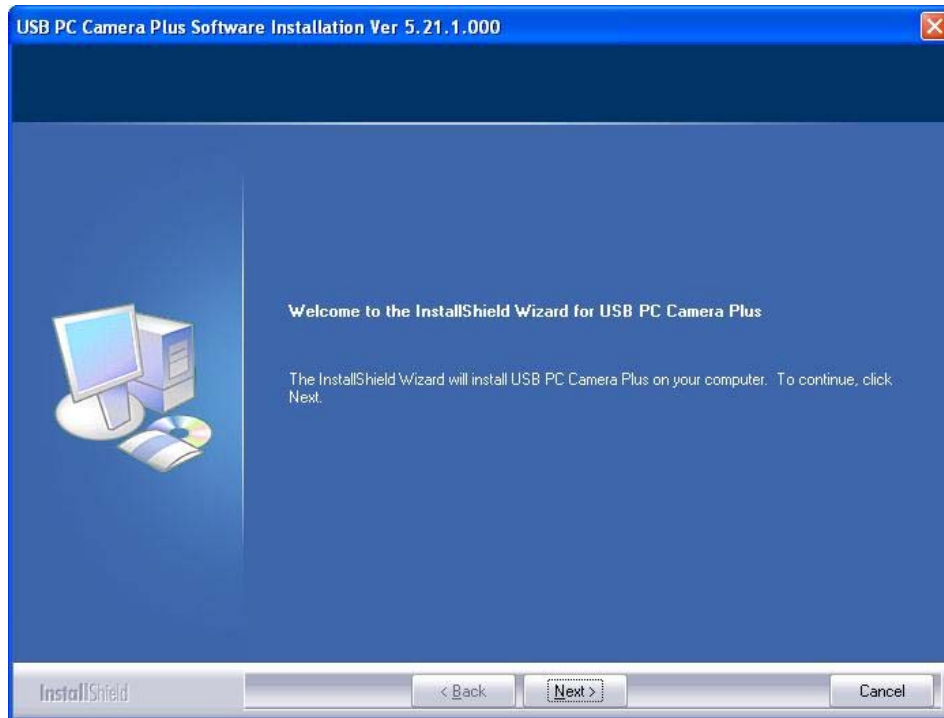
Program Folder:
VP-EYE Camera66

Existing Folders:
Accessories
Administrative Tools
Games
SoundMAX
Startup

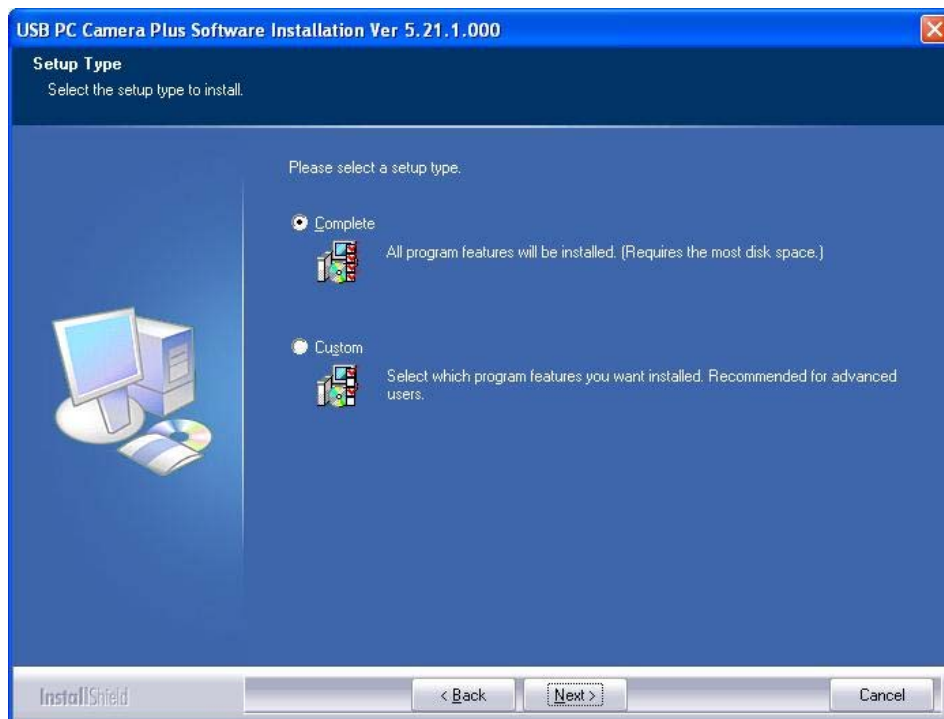
InstallShield

< Back Next > Cancel

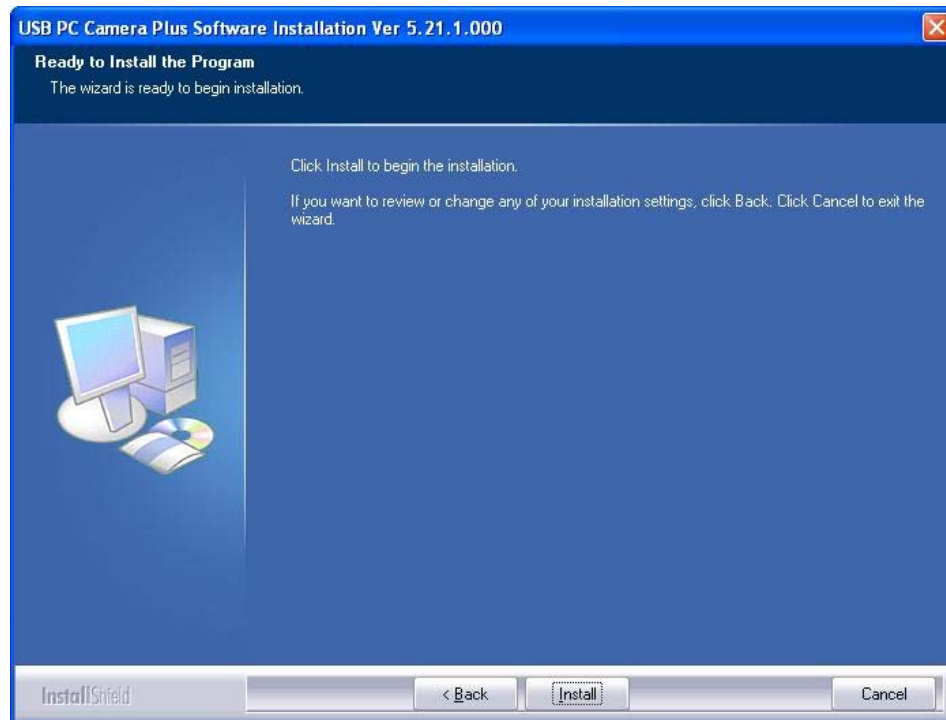
6. Install the camera driver. Click on Next.



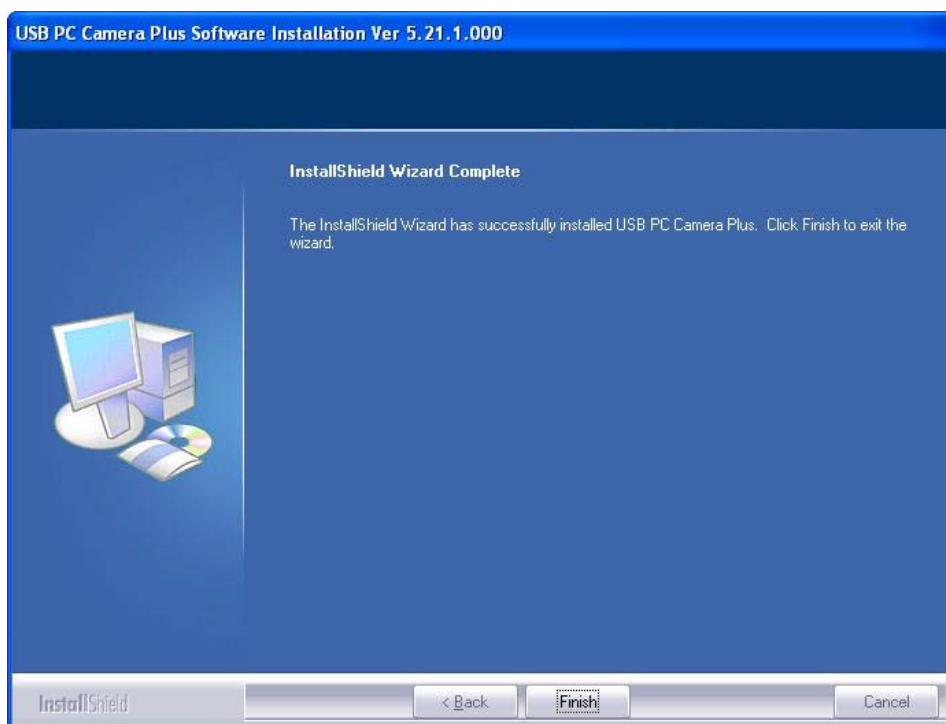
7. Select “Complete” and click on Next.



8. Click on Install.



9. Click on Finish.




10. Plug in the camera device.



11. Double click on the VP-EYE 6.6 icon to open the software.



12. You may click the icon  to enter the on-line help window.



WEEE Directive & Product Disposal



At the end of its serviceable life, this product should not be treated as household or general waste. It should be handed over to the applicable collection point for the recycling of electrical and electronic equipment, or returned to the supplier for disposal.